

Fiery Canoe Foundation

Dear Fiery Canoe Foundation supporters,

As our generous donors we would like to update you on the many projects the Fiery Canoe Foundation has funded since January.

PROJECTS FCF HAS FUNDED

- Provision of roofing for the Banaban Primary School
- Starlink internet for Banaba
- Motorboat engine to Banaba
- Satellite Youth Manual Brickmaking Machines on Banaba Island
- Cement mixer for the road leading to Fatima Church on Banaba

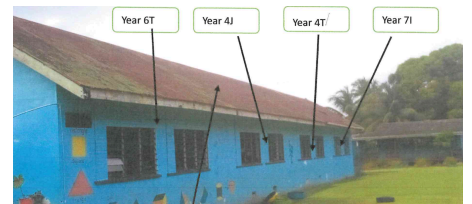
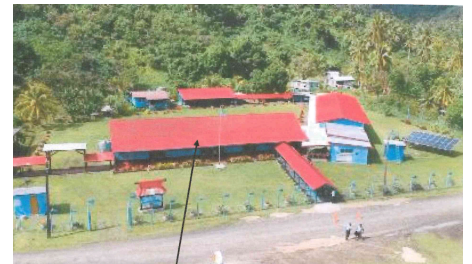
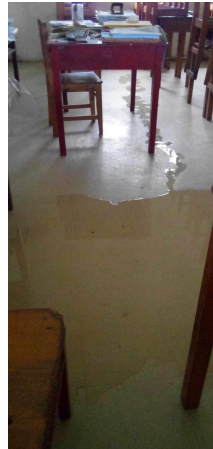
Provision of roofing for the Banaban Primary School

Category: Education and Reconstruction

Description

The first Banaban Primary School building was built in 1951. The roofing of the school hasn't been updated since the initial building and has deteriorated since 1951 giving way to extensive leaking within the classrooms. During the rainy weather, black mold forms on the ceiling and buckets are required to prevent the floor from getting wet which has been incredibly inconvenient to students and teachers alike. Walking on the roof is also incredibly dangerous as it faces imminent collapse. Accommodating 4 classrooms, this building has been wired by certified electricians when the solar system was installed by IT's Time foundation in 2022. With the smart TVs in the building, the greatest risk was when the leakage would affect the wiring system and affect the learning devices.

The FCF provided funding for the roofing structure of the 73-year-old building in order to continue to strive to keep the aspirations of our Banaban forefathers alive through educating the future human resources of the Banaban community.



Starlink Internet for Banaba

Category: Communication

Description

The FCF provided funding to purchase two Starlinks for Rabi and Banaba. Starlink is a satellite internet network that provides high-speed internet to remote locations, homes, and boats. Given that Banaba had been without internet and any consequent form of communication that wasn't brought to the island by boat (in written or spoken form), the purchase of this internet was vital to maintaining a connection to Banaba as most of the Banaban population today lives on Rabi island in Fiji.



Motorboat engine to Banaba

Category: Transportation and Sustainability

Description

Banaba's residents rely heavily on motorboats for fishing and accessing essential services. Unfortunately, existing motorboat engines often run on fossil fuels, leading to environmental degradation, high operating costs, and reliance on external fuel sources. Additionally, the scarcity of spare parts and maintenance services further exacerbates the challenges faced by the community.

The primary objective of this project was to introduce motorboat engines to the people of Banaba, with the following goals:

- Enhancing accessibility and mobility for coastal fishermen
- Improving economic viability for boat operators
- Building local capacity for maintenance and repair of motorboat engines

The FCF funded the purchase of a 15 hp motorboat with key features of the proposed engine including:

- Utilization of a small engine in Kiribati for the fishermen on Banaba
- A lightweight and durable design suitable for the island's coastal waters and fishing activities
- Integration of safety features and navigational aids to ensure safe operation

The introduction of motorboat engines holds great promise for empowering the people of Banaba and fostering economic development. By embracing innovation and collaboration, the FCF hopes to aid the Banaban community in creating a brighter future for the local fishermen.

Satellite Youth Manual Brickmaking Machines on Banaba Island

Category: Construction and Sustainable Building

Description

Banaba's residents rely on traditional building materials such as coral stones and imported cement, which are expensive and environmentally unsustainable. Moreover, the island's fragile ecosystem is at risk due

to the depletion of natural resources and there are many unemployed youth sitting idle with no skills. Introducing a manual brickmaking machine powered by local manpower can mitigate these issues by utilizing readily available materials and reducing reliance on imported resources and creating jobs for unemployed youth.

The primary objective of this project is to introduce a manual brickmaking machine to Banaba Island, with the following goals:

- Increasing access to affordable and sustainable building materials for housing construction and infrastructure projects
- Reducing reliance on imported building materials and promoting the use of locally available resources
- Generating income and employment opportunities for community members through brick production and sales
- Enhancing local capacity for brickmaking techniques and machine operation, fostering self-sufficiency and skills development

The FCF funded the purchase of such brickmaking machines that are designed to be simple, cost-effective, and suitable for operation by local community members.

Key features of these machines include:

- Manual operation, requiring minimal external power and utilizing manpower for mixing, compacting, and molding bricks
- A versatile mold system, allowing for the production of bricks of various sizes and shapes to meet diverse construction needs
- Durable construction using locally sourced materials, ensuring longevity and minimal maintenance requirements
- A modular design for easy transportation and setup in remote or underserved areas, facilitating access to brickmaking facilities

The implementation of this project was carried out by the Satellite Youth Organisation based on Banaba.

The introduction of a manual brickmaking machine on Banaba Island represents a significant step towards achieving sustainable development and improving the quality of life for its residents. By harnessing local resources and empowering the community, the FCF strives to promote a resilient and prosperous future for Banaba.

Cement mixer for the road leading to Fatima Church on Banaba

Category: Religion, Revival, Reconstruction

Description

The FCF funded the purchase of a cement mixer needed to repair the road on Banaba that leads to the beautiful Fatima Church. Despite the plethora of history it holds, the Banaban people have stopped going to the church because of the road conditions. The FCF worked with the church members who took it upon themselves to fix the roads by providing funds for the cement mixer.